

# Human CD3E/CD3 epsilon Protein

Cat. No. CDE-HM101

## Description

<b>Source</b>	Recombinant Human CD3E/CD3 epsilon Protein is expressed from HEK293 with His tag at the C-Terminus. It contains Asp23-Asp126.
<b>Accession</b>	P07766
<b>Molecular Weight</b>	The protein has a predicted MW of 12.6 kDa. Due to glycosylation, the protein migrates to 14-18 kDa based on Tris-Bis PAGE result.
<b>Endotoxin</b>	Less than 1EU per µg by the LAL method.
<b>Purity</b>	> 95% as determined by Tris-Bis PAGE

## Formulation and Storage

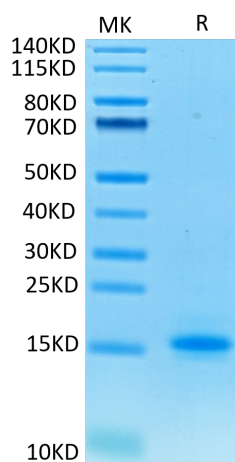
<b>Formulation</b>	Lyophilized from 0.22µm filtered solution in PBS (pH 7.4). Normally 8% trehalose is added as protectant before lyophilization.
<b>Reconstitution</b>	Centrifuge the tube before opening. Reconstituting to a concentration more than 100 µg/ml is recommended. Dissolve the lyophilized protein in distilled water.
<b>Storage</b>	-20 to -80°C for 12 months as supplied from date of receipt. -80°C for 3-6 months after reconstitution. 2-8°C for 2-7 days after reconstitution. Recommend to aliquot the protein into smaller quantities for optimal storage. Please minimize freeze-thaw cycles.

## Background

CD3E, is a single-pass type I membrane protein. CD3 (cluster of differentiation 3) T cell co-receptor helps to activate both the cytotoxic T cell (CD8 naive T cells) and also T helper cells (CD4 naive T cells). It consists of a protein complex and is composed of four distinct chains. In mammals, the complex contains a CD3γ chain, a CD3δ chain, and two CD3ε chains.

## Assay Data

### Tris-Bis PAGE

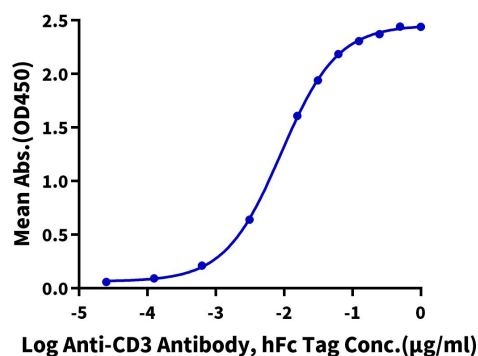


Human CD3E on Tris-Bis PAGE under reduced condition. The purity is greater than 95%.

### ELISA Data

#### Human CD3E, His Tag ELISA

0.1µg Human CD3E, His Tag Per Well



Immobilized Human CD3E, His Tag at 1µg/ml (100µl/well) on the plate. Dose response curve for Anti-CD3 Antibody, hFc Tag with the EC50 of 9.0ng/ml determined by ELISA.